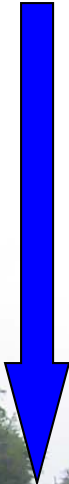
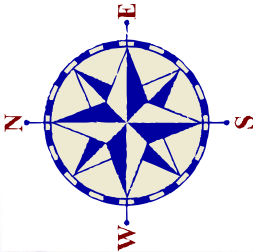
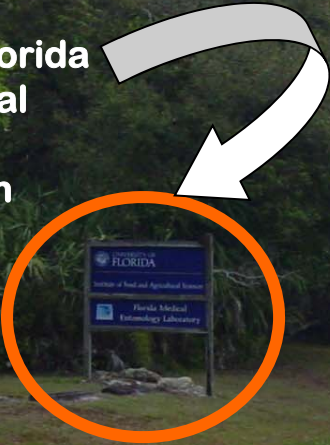


Indian River Lagoon is here – end of road – beginning of water



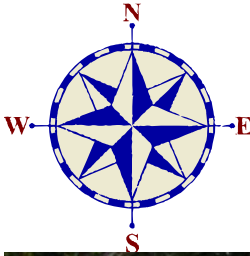
University of Florida  
– Florida Medical  
Entomology  
Laboratory Sign



ENTER HERE

EXIT DRIVE – DO NOT ENTER HERE

Oslo Road  
Also known as  
9<sup>th</sup> Street SE



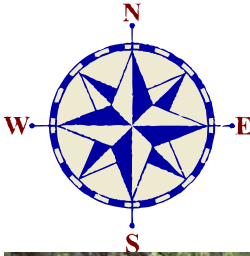
**Driveway to employee parking – you may park here to unload for the Bunkhouse – then move car to front lot parking for ID course**

**Walking trail to Boathouse**

**Driveway to Admin Bldg**

**Parking for ID Course Students and Bunkhouse Residents**



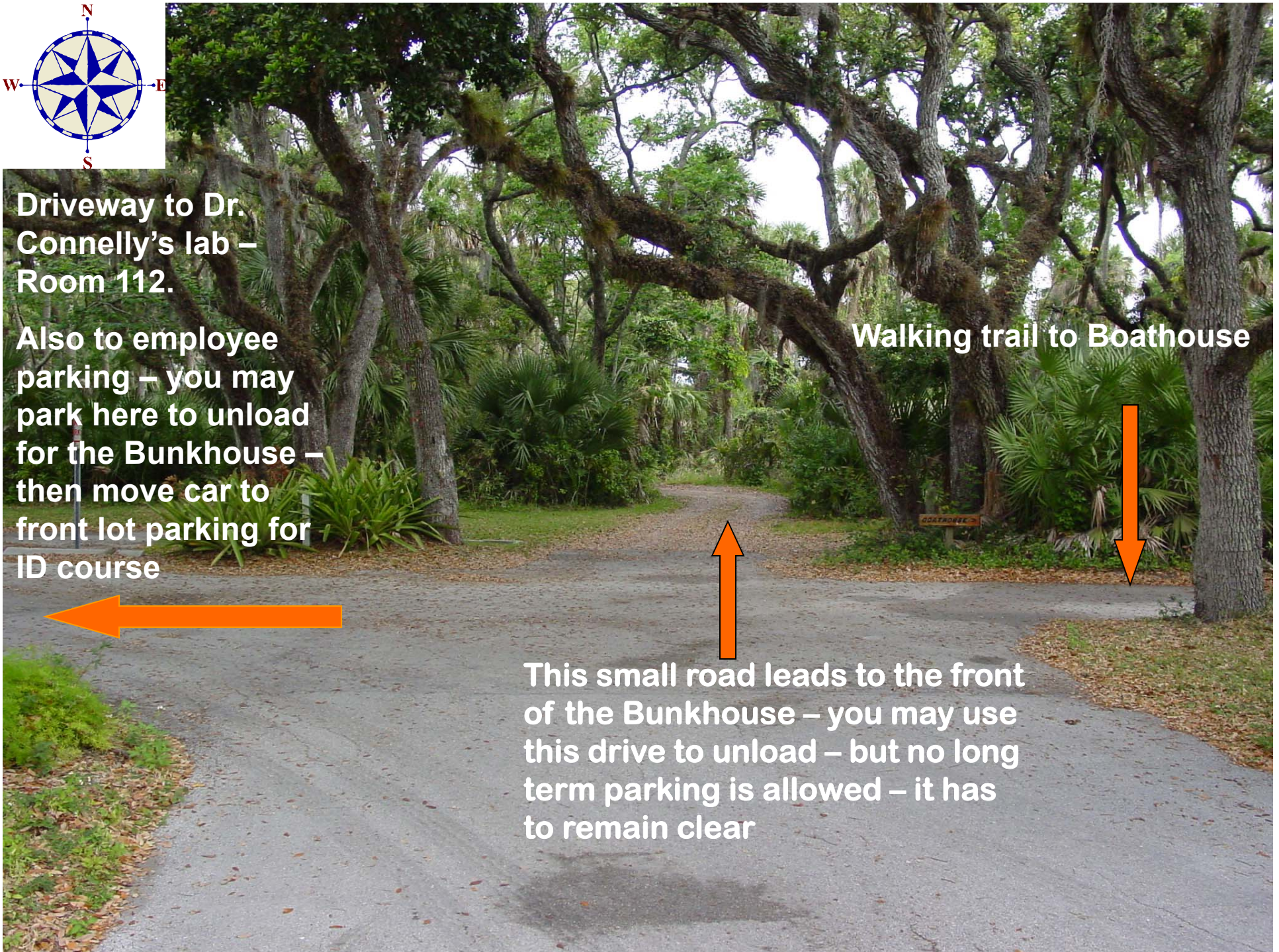


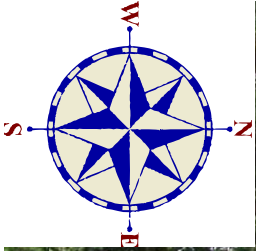
Driveway to Dr.  
Connelly's lab –  
Room 112.

Also to employee  
parking – you may  
park here to unload  
for the Bunkhouse –  
then move car to  
front lot parking for  
ID course

Walking trail to Boathouse

This small road leads to the front  
of the Bunkhouse – you may use  
this drive to unload – but no long  
term parking is allowed – it has  
to remain clear





**Entrance to Bunkhouse – Box with envelopes and keys will be on these front steps if I am not around when you arrive**

**Emergency Exit Only from Bunkhouse**



**Welcome to the FMEL Hilton – aka The Bunkhouse**





**Men's Showers**

**Ladies Showers**

**This door leads to  
screened porch**

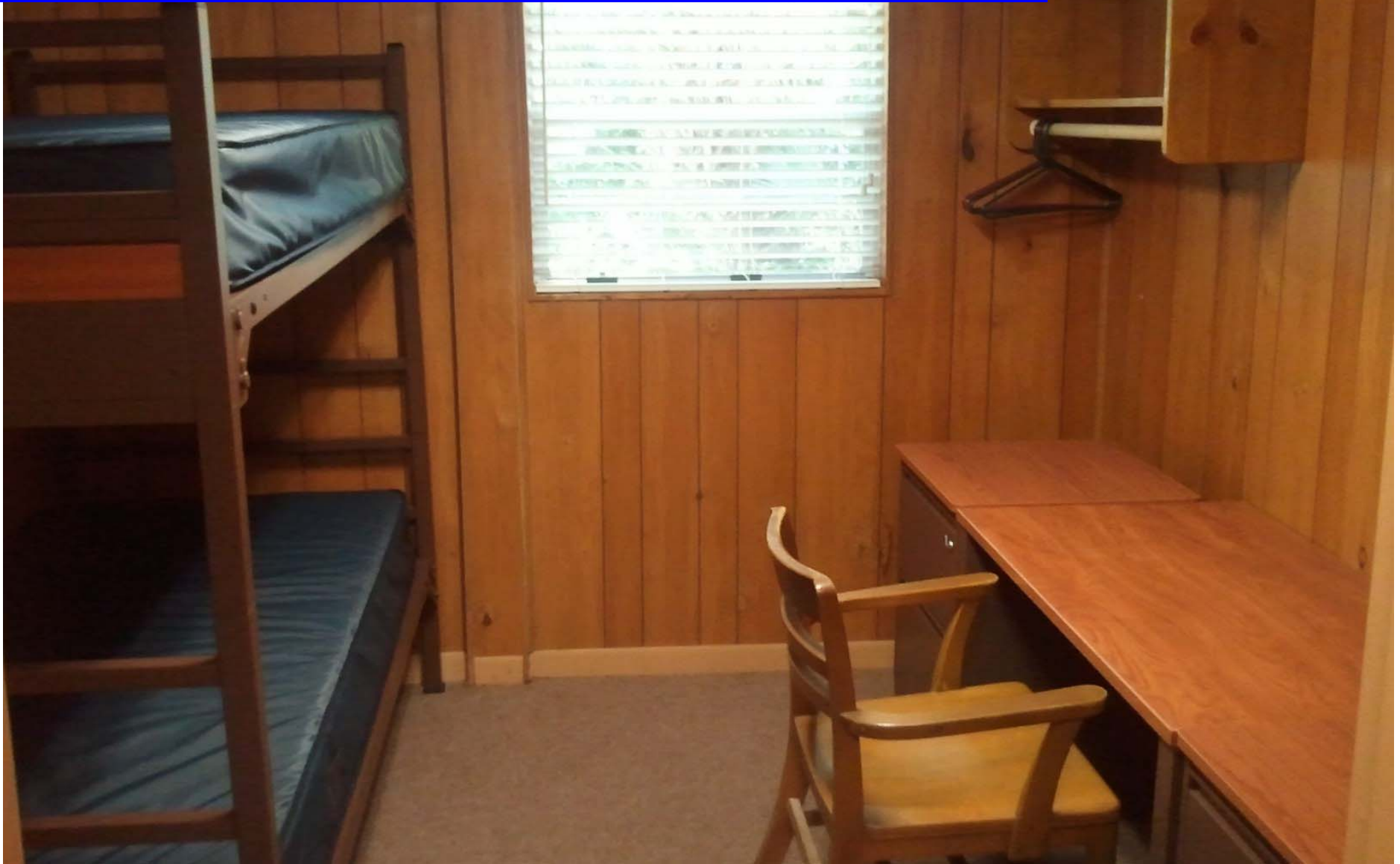
**Door to bunk rooms is here**

**Common area/Kitchen**

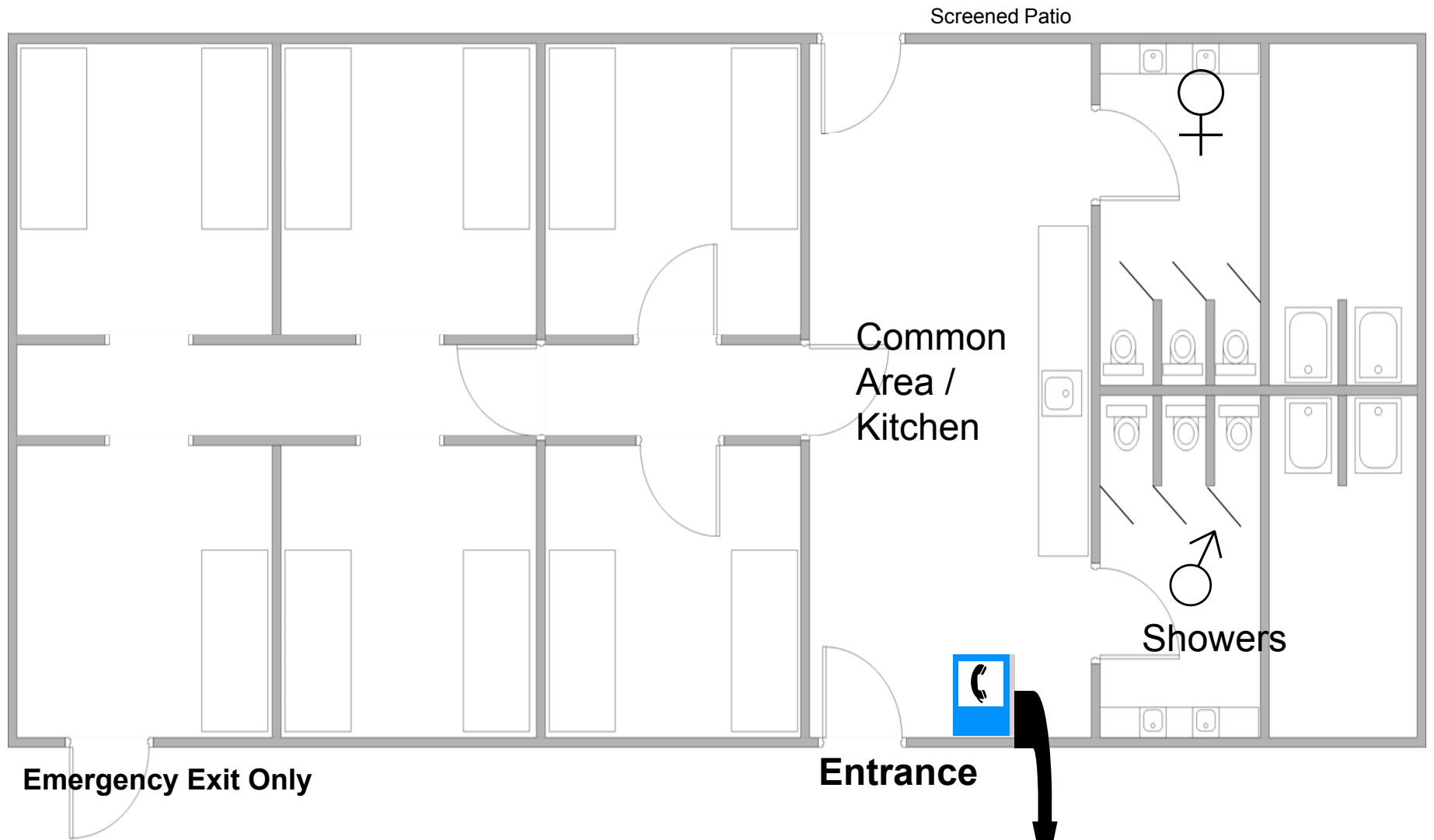




An example of a bunk room – this is the Culex Suite and comes with a spectacular view and manually operated blinds







# FMEL Bunkhouse

Calls may be received directly into the Bunkhouse by using:  
772-778-7200 x.140

For outgoing local calls, dial 9 and then the phone number.  
Residents need a phone card for long distance calls